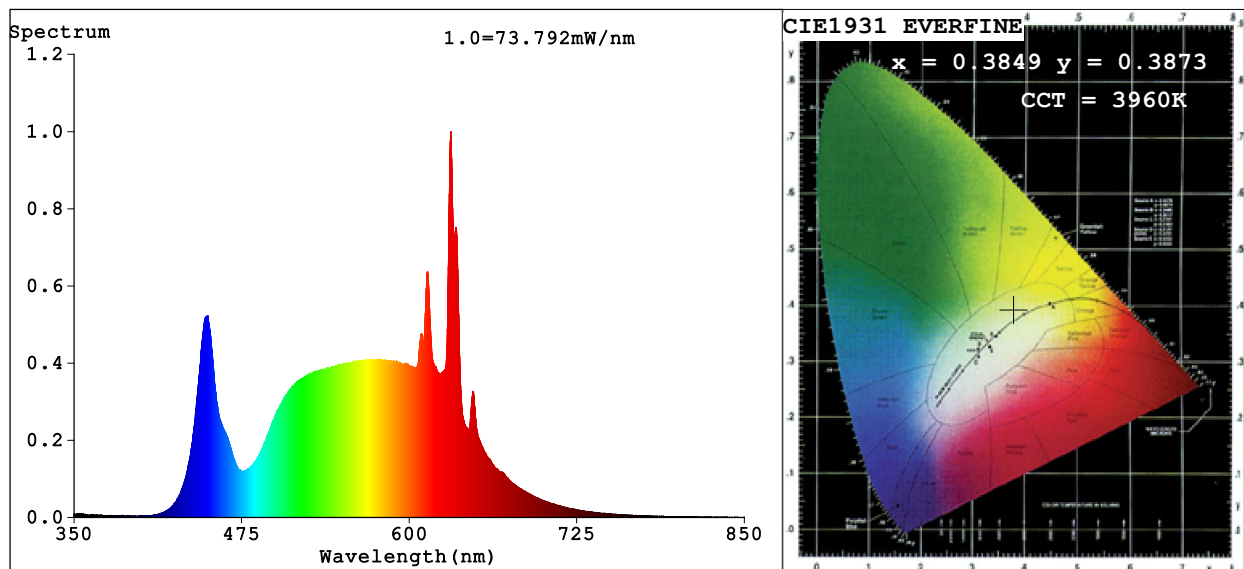


Spectrum Test Report



Color Parameters:

Chromaticity Coordinate: $x=0.3849$ $y=0.3873$ $u'=0.2238$ $v'=0.5068$
 CCT=3960K (Duv=0.0036) Dominant WL:Ld =577.5nm Purity=31.7%
 Ratio:R=19.8% G=76.8% B=3.5%; Peak WL:Lp=631.0nm FWHM=8.6nm
 Render Index:Ra=91.1 CRI=87.0 TM30:Rf=91 Rg=101
 R1 =92 R2 =92 R3 =91 R4 =93 R5 =91 R6 =89 R7 =94
 R8 =87 R9 =61 R10=80 R11=93 R12=69 R13=91 R14=94 R15=89

Photo Parameters:

Flux = 2051 lm Eff. : 119.89 lm/W Fe = 6.195 W

Electrical parameters:

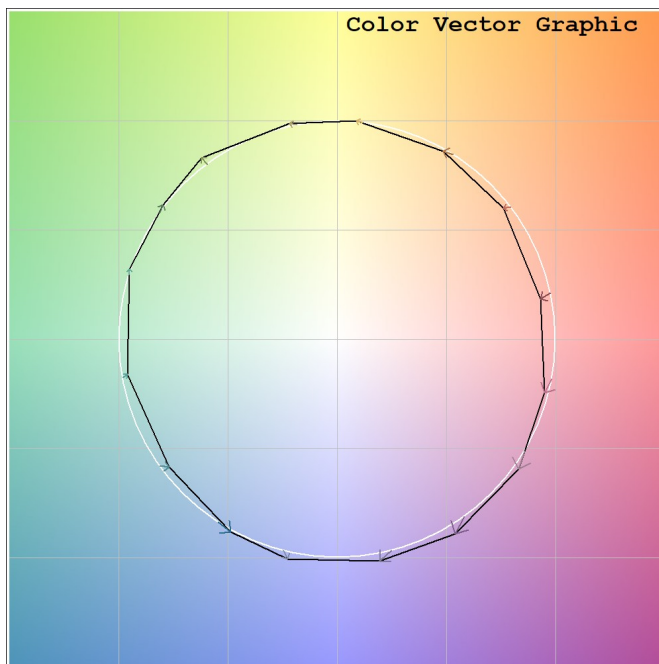
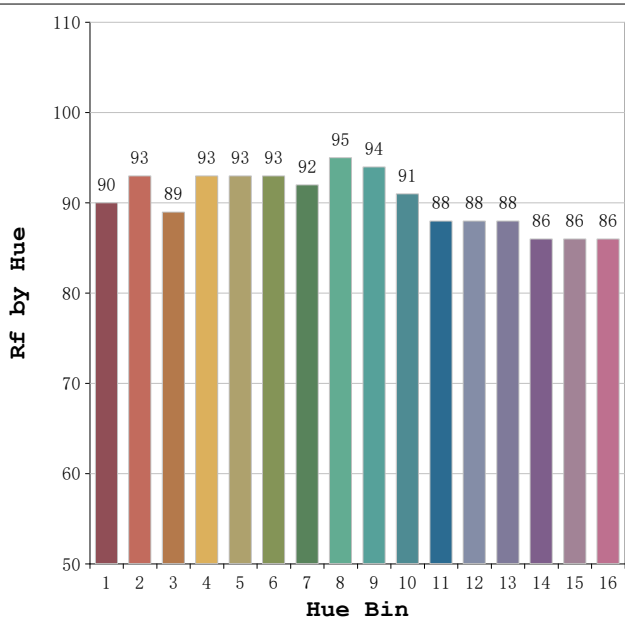
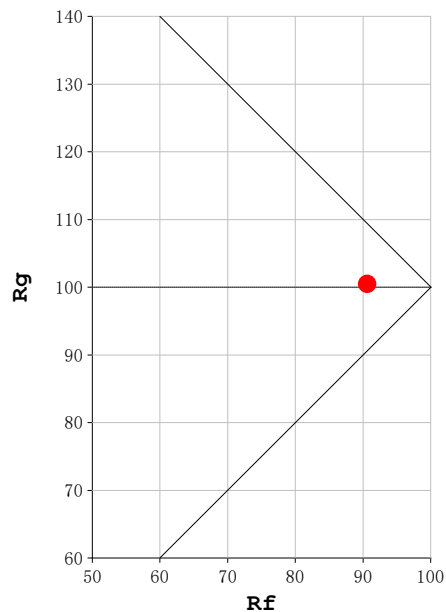
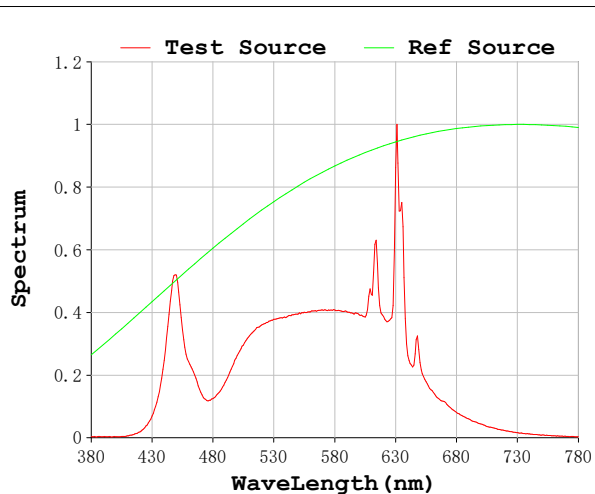
V = 230.19 V I = 0.08406 A P = 17.10 W PF = 0.8840

Status: Integral T = 436 ms Ip = 52409 (80%)

Model:Spotia 18w Negro
 Tester:Sergio Carneros
 Temperature:20Deg
 Manufacturer:Luz Negra

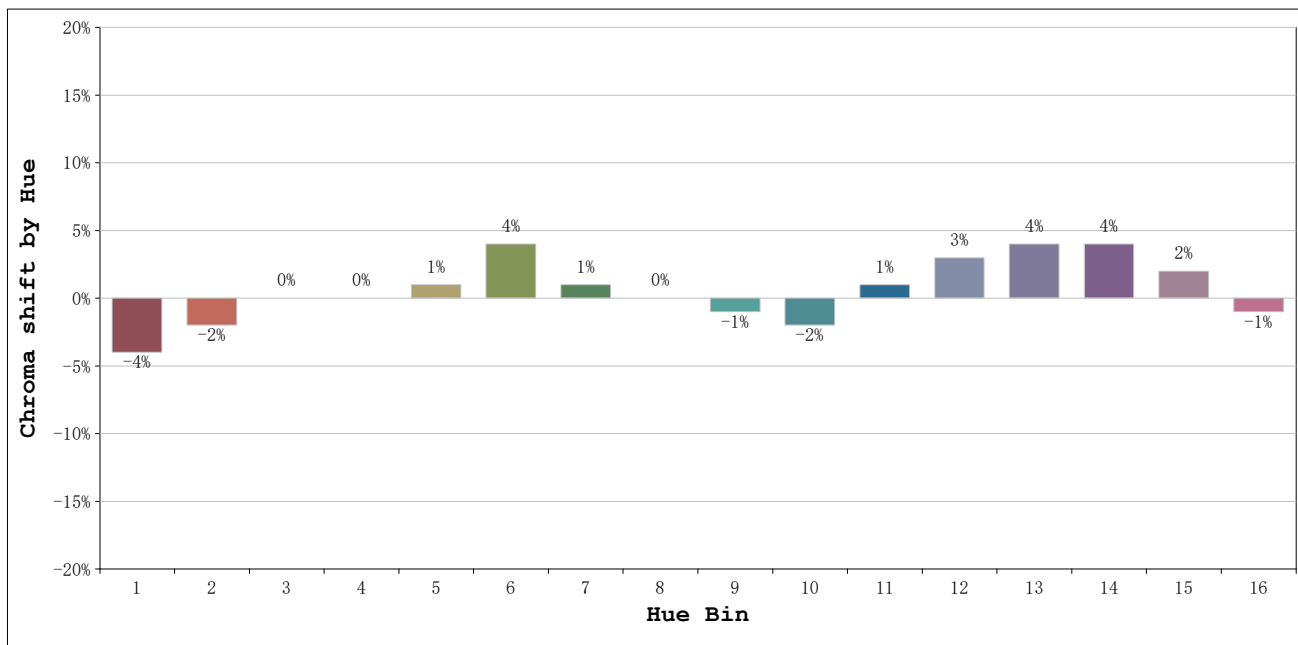
Number:4000k 18°
 Date:2026-03-23 16:41:50
 Humidity:50%
 Remarks:1 unidad

Rf: 91 **CCT: 3960 K** **u': 0.2238**
Rg: 101 **Duv: 0.0036** **v': 0.5068**



Model:Spotia 18w Negro
 Tester:Sergio Carneros
 Temperature:20Deg
 Manufacturer:Luz Negra

Number:4000k 18°
 Date:2026-03-23 16:41:50
 Humidity:50%
 Remarks:1 unidad



			Graphic shift(%)	
Hue Bin	Hue Angle	Rf	Chroma	Hue
1	0.0° - 22.5°	90	-4	-1
2	22.5° - 45.0°	93	-2	1
3	45.0° - 67.5°	89	0	5
4	67.5° - 90.0°	93	0	3
5	90.0° - 112.5°	93	1	3
6	112.5° - 135.0°	93	4	0
7	135.0° - 157.5°	92	1	-3
8	157.5° - 180.0°	95	0	-2
9	180.0° - 202.5°	94	-1	0
10	202.5° - 225.0°	91	-2	3
11	225.0° - 247.5°	88	1	7
12	247.5° - 270.0°	88	3	3
13	270.0° - 292.5°	88	4	-5
14	292.5° - 315.0°	86	4	-7
15	315.0° - 337.5°	86	2	-7
16	337.5° - 360.0°	86	-1	-6

Model:Spotia 18w Negro
 Tester:Sergio Carneros
 Temperature:20Deg
 Manufacturer:Luz Negra

Number:4000k 18°
 Date:2026-03-23 16:41:50
 Humidity:50%
 Remarks:1 unidad